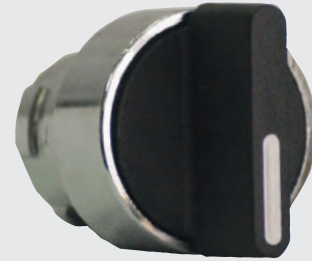




**SELECTOR SWITCH HEADS, KEY SWITCH HEADS, ILLUMINATED PUSH BUTTONS & CONTACT BLOCKS**

**SELECTOR SWITCH HEAD - 22mm - LONG HANDLE METAL TYPE**

Part Number	Operation	UNIT PRICE (excl. VAT)
NP2-BJ2	2 Positions Maintained	R 40.00
NP2-BJ3	3 Positions Maintained	R 40.00
NP2-BJ4	2 Positions Spring Return	R 40.00
NP2-BJ5	3 Positions Spring Return	R 40.00



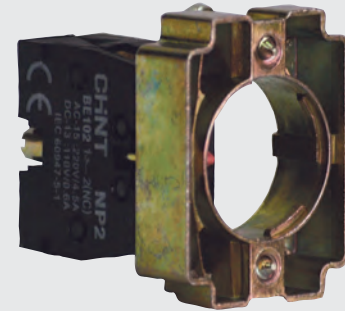
NP2-BD2  
SELECTOR SWITCH

**SELECTOR SWITCH HEAD - 22mm - SHORT HANDLE METAL TYPE**

Part Number	Operation	UNIT PRICE (excl. VAT)
NP2-BD2	2 Positions Maintained	R 57.00
NP2-BD3	3 Positions Maintained	R 57.00
NP2-BD4	2 Positions Spring Return	R 57.00
NP2-BD5	3 Positions Spring Return	R 57.00

**SELECTOR KEY SWITCH HEAD - 22mm - METAL TYPE**

Part Number	Operation	UNIT PRICE (excl. VAT)
NP2-BG2	2 Positions Maintained	R 85.00
NP2-BG3	3 Positions Maintained	R 85.00
NP2-BG4	2 Positions Spring Return	R 85.00
NP2-BG5	3 Positions Spring Return	R 85.00



NP2-BZ101  
SUPPORT BASE + CONTACT BLOCK

**PUSH BUTTONS CONTACT BLOCKS**

Part Number	Description	Auxiliary Contacts	UNIT PRICE (excl. VAT)
NP2-BZ101	Support Base + Contact Block	1 x NO	R 27.00
NP2-BZ102	Support Base + Contact Block	1 x NC	R 27.00
NP2-BZ103	Support Base + Contact Block	2 x NO	R 47.00
NP2-BZ104	Support Base + Contact Block	2 x NC	R 47.00
NP2-BZ105	Support Base + Contact Block	1 x NC + 1 x NO	R 47.00
NP2-BE101	Contact Block	NO	R 20.00
NP2-BE102	Contact Block	NC	R 20.00
NP2-BZ009	Push Button Support Base ONLY	N/A	R 14.00

**CONTACT BLOCK ILLUMINATOR**

Part Number	Voltage (V)	Action	Auxiliary Contacts	UNIT PRICE (excl. VAT)
NP2-BV60	400 V	Max Direct	N/A	R 32.00
NP2-BV7	230 V	Max Resistor	N/A	R 36.00
NP2-BW061	400 V	Max Direct	1 x NO	R 52.00
NP2-BW062	400 V	Max Direct	1 x NC	R 52.00
NP2-BW071	230 V	Max Resistor	1 x NO	R 56.00
NP2-BW072	230 V	Max Resistor	1 x NC	R 56.00

**EMPTY ENCLOSURE**

Part Number	Size	Number of Holes	UNIT PRICE (excl. VAT)
JXB5-1	70 x 70mm	1 Hole	R 39.00
NP2-01	65 x 65mm	1 Hole	R 39.00
NP2-J01	65 x 65mm	1 Hole (Yellow Lid)	R 39.00
NP2-02	100 x 65mm	2 Hole	R 49.00
NP2-03	135 x 65mm	3 Hole	R 59.00



NP2-03  
EMPTY ENCLOSURE